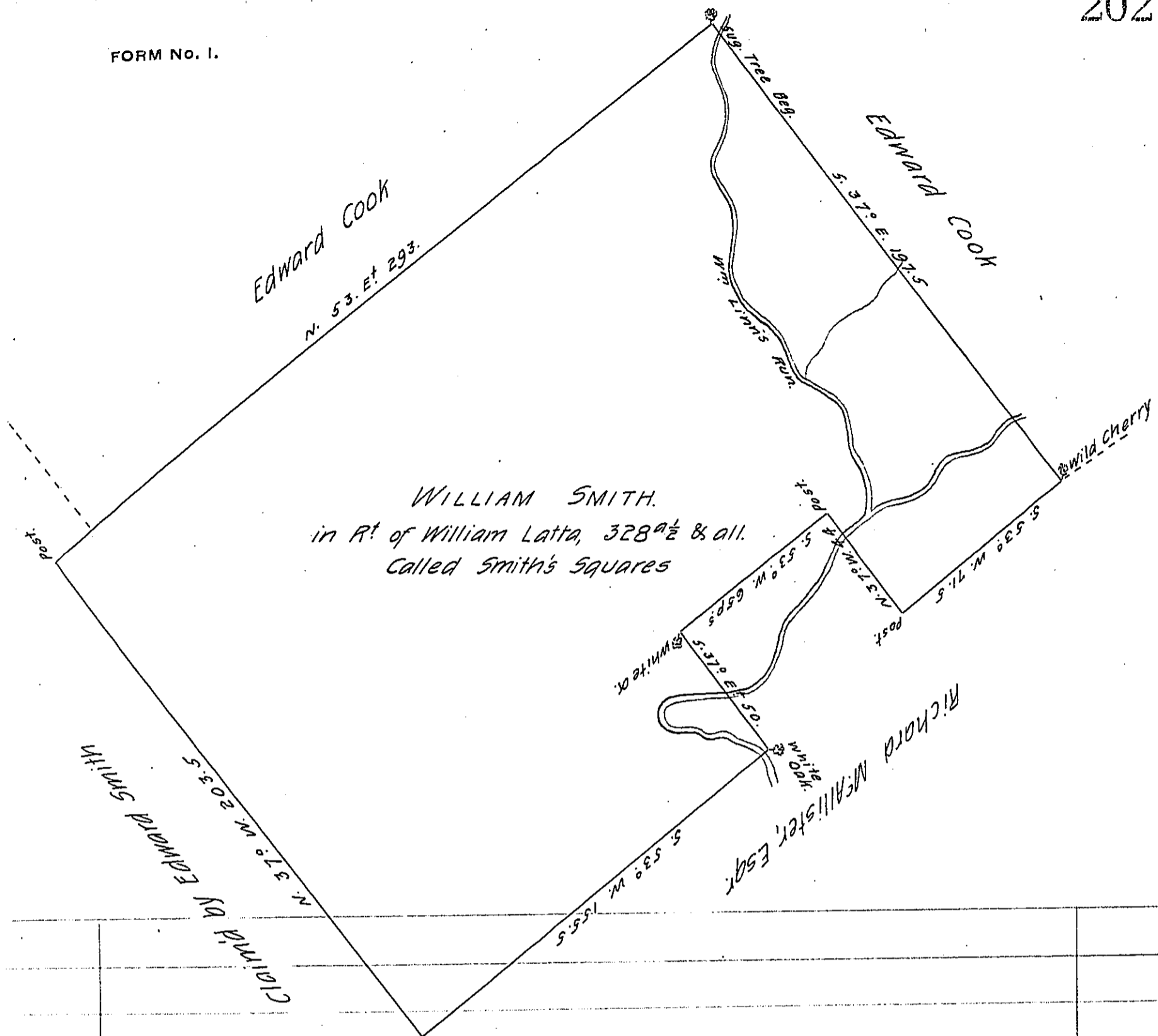


FORM NO. 1.



Situated on the East Side of Monongahela River on William Linn's Run, formerly Bedford, now Westmoreland County and Survey'd the 20th day of November 1772, in pursuance of an Order N^o 1448, dated the 3^d day of April 1769, and a Warrant for 100^{ac} dated the 28th day of June 1770.

By ^{r. c.} A Lane, Dep _____

To John Lukens, Esqr.
Surveyor General.

IN TESTIMONY that the above is a copy of the original remaining on file in the Department of Internal Affairs of Pennsylvania, made conformably to an Act of Assembly approved the 16th day of February, 1833, I have hereunto set my Hand and caused the Seal of said Department to be affixed at Harrisburg, this seventeenth day of April 1906.

James R. Brown
Secretary of Internal Affairs.